

# Purple Contract Billing

## Rental, Lease, Fleet & Equipment Dealers

From the architects of AxMRO, DAXeam and eXsam comes a new generation of products under the Purple Brand

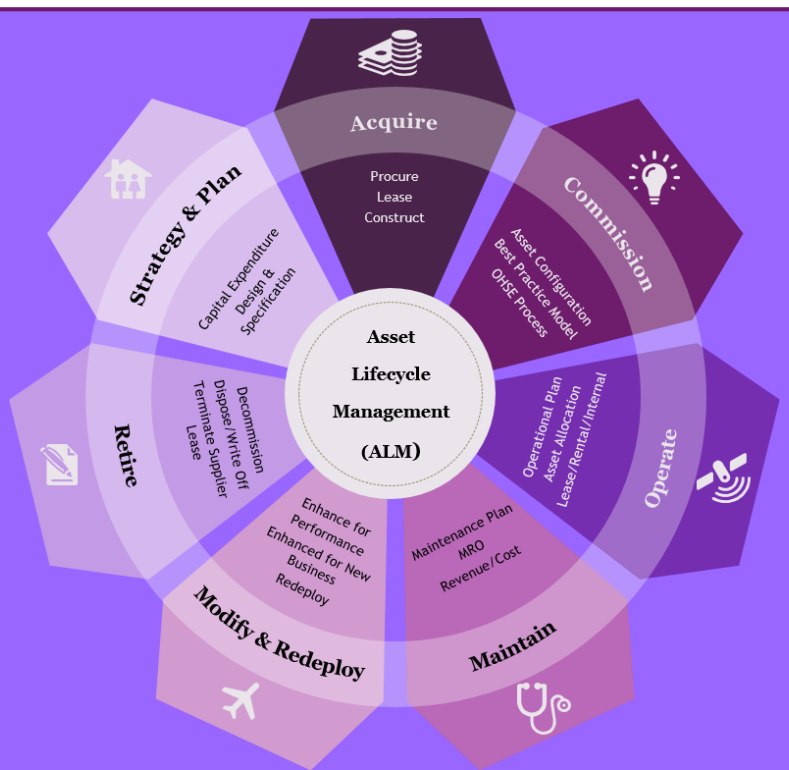
Purple EAM,  
Purple Contract Billing & Purple PM.

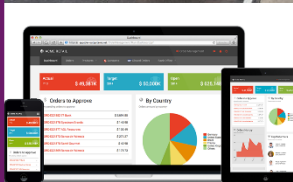
With the latest in advanced equipment and contract management.

Purple Contract Billing is an advanced, highly configurable **enterprise-grade** Fleet and Equipment Rental, Lease and Dealer solution. It gives you the power to improve capital asset management **in ways that increase reliability and availability, enhance maintenance visibility and reduce costs, enable regulatory compliance and support sustainability initiatives.** Extended with industry specific **functionality**, Purple EAM gives you unparalleled flexibility.

Mobile enabled and developed within, and fully integrated with Microsoft Dynamics AX ERP - this is best-of-breed RED within best-of-class ERP.

Purple Contract Billing embeds Asset Lifecycle Management (ALM), which aims to drive greater value from your physical assets (fleet or equipment), whether they are owned, leased, rented or customer owned. From capital planning and budgeting, to procurement, operations, sales, support and repair; Purple Contract Billing maximize profitability and return on investment.





### Benefits of RED include:

- 360° visibility and control of your own and customer mobile assets
- Reduce maintenance and labor costs
- Increase maintenance productivity & practices
- Increase asset reliability, utilisation and availability.
- Reduce stock levels
- Enable compliance with applicable regulations
- Improve warranty claims management
- Increase profitability with better contract control and lower costs
- Integrated permits

*If your business depends on your assets being operational then **being mobile is crucial.***

*All the core Purple Contract Billing executable functionality is rendered as HTML5 via a platform independent mobile application which enable online and offline operation.*

### Additional modules to core Purple Contract Billing:

#### Failure, Incident & Accident Tracking

- Failure, Incident & Accident Recording
- Failure & Incident Tracking & Resolution.

#### Predictive Maintenance

Predictive parameters can be configured which will trigger predictive maintenance notifications into the service & support backlog. E.g. via sensors on Equipment.

**Routes** Route definition, costing and execution on Google Maps.

**Operations** Tracking of operation events such as costs, drivers and fuel

### Features Supported by Purple Contract Billing Include:

#### Fleet and Equipment Configuration

- Define equipment groups, brands and models.
- Define equipment group characteristics for group level technical data.
- Graphically build simple and complex equipment structures.

#### Fleet and Equipment Management

- Define & register equipment.
- Setup equipment characteristics for equipment specific technical data.
- Manage user owned, customer owned and loan equipment.
- Graphical structures and electronic documents.
- Full visibility on equipment uptime, downtime, contract allocation, etc.

#### Service and Support Backlog

The Service and Support backlog has 3 primary sources for new work orders:

- New work requests – raised by anyone throughout the plant.
- Preventative maintenance – The are work orders initiated based on the utilisation of assets.
- Failure and predictive notifications.

#### Lease & Rental Management

Various types of lease models are supported, including, options such as full-maintenance lease (FML), operational lease, managed maintenance, and roadside assistance.

#### Rental Contract Management

The rental contract functionality for short- and long-term contract management.

#### SLA Contracts

Service level agreement management.

#### Permit Management

- Permit definition, register and expiry management.
- Road worthy certificates
- Driver licences

#### Preventative Maintenance (Maintenance Forecast)

Activities are used to create a library of Preventative Maintenance procedures. The latter includes inspection, lubrication and routine maintenance work. Once Preventative procedures are created, they are associated with assets and are automatically scheduled as work orders based on meter readings, list dates or time intervals.

#### Service (Work Order) Execution

- Work pack and work order management.
- Work order management includes multi resources (Trade, Items, Services, and Special Tools).
- Manage work & billing for external customers, internal cross department billing or cost centre accumulation.
- Interactive Gantts and graphics
- Item reservation and usage feedback via Inventory.

#### Warranty Management

- Generic warranty definitions
- Specific warranty definition by equipment
- Warranty claims register and tracking

**Fully integrated with Microsoft Dynamics AX Finance, HR, Stock and Warehouse Management. Developed in the Microsoft Dynamics AX architecture.**

#### Asset Centric Intelligence

- Purple Contract Billing enables effective decision making and gives complete visibility through a wide range of reports, cubes and pivot tables.

Purple Window

sales@purple-window.com  
or visit  
www.purple-window.com