

# Purple FSM

## Plant & Equipment Optimization

*From the architects of AxMRO, DAXeam and eXsam comes a new generation of products under the Purple Brand*

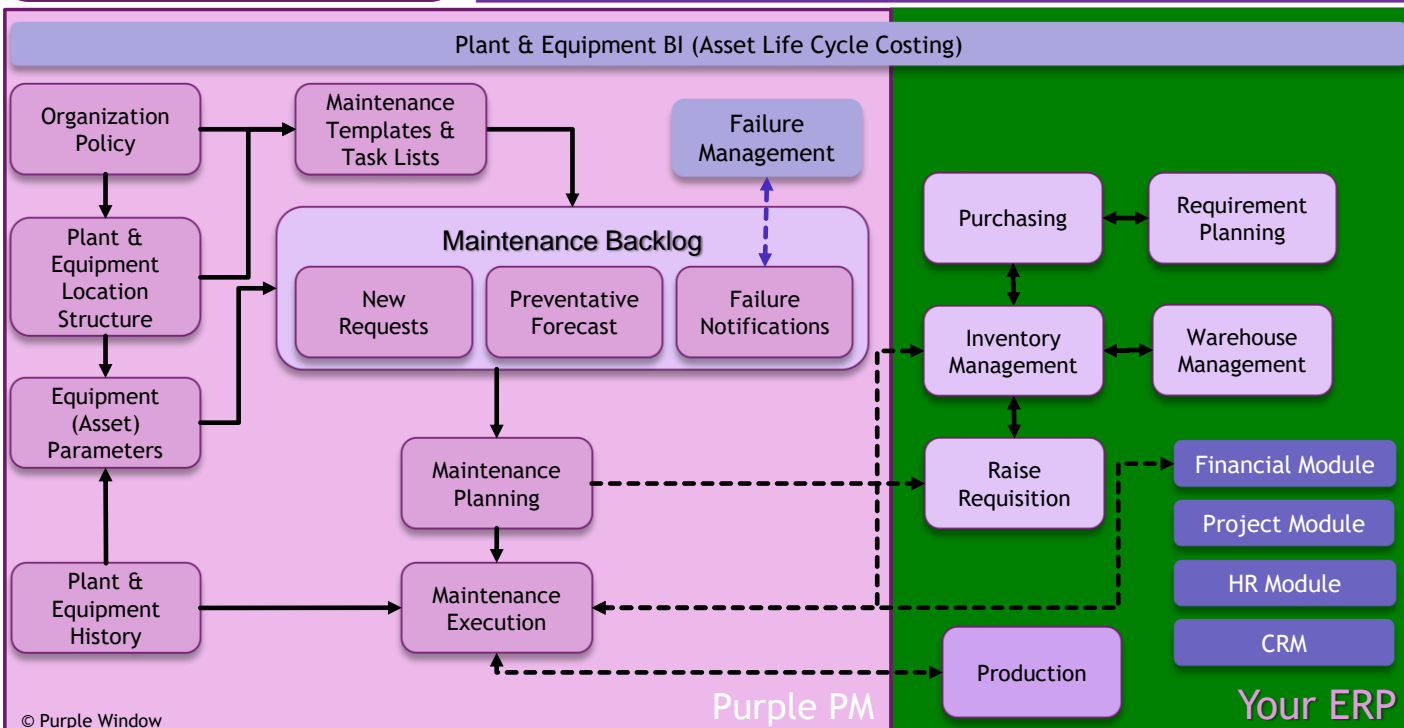
### Purple FSM

*With the latest in advanced plant and equipment maintenance, mobile as well as built and integration hooks for your ERP*

Purple Mobile FMS is an advanced **Plant and Equipment Management** module which can integrate with most ERPs. It supplies comprehensive functionality for the planning, management and execution of all maintenance work orders as well as the tracking of plant and equipment related information. It eliminates excess and obsolete spares through integration between maintenance and stores and enable the optimisation of your Plant & Equipment Fleet

Purple FSM has been designed with ERP in mind. It can tightly integrate with all major ERPs. All the core Purple FSM executable functionality is rendered as HTML5 via a platform independent mobile application which enable online and offline operation.

Complex plant location structures, serialized equipment, valid spares as well as maintenance plans and equipment KPIs can all be configured, controlled and managed via the maintenance backlog, planning and execution functions.



## Benefits of integrated plant equipment management include:

- 360° visibility and control of the entire plant and equipment
- Reduce maintenance costs
- Reduce production costs
- Reduce labour costs
- Increase maintenance productivity
- Increase asset utilisation and availability
- Improve maintenance practices
- Reduce stock levels
- Track key equipment KPIs
- Increase asset profitability
- Minimize downtime
- Maintenance budget planning and control
- Reliability parameter control and tracking

## Features Supported by Purple PE Include:

### Plant Location Structure and Equipment

- Define plant and equipment groups.
- Define equipment group characteristics for group level technical data.
- Graphically build plant simple and complex location structures
- Define critical, major, serial controlled and part controlled locations

### Equipment Management

- Define & register equipment.
- Setup equipment characteristics for equipment specific technical data.
- Graphical plant structures
- Full visibility on equipment uptime, downtime, contract allocation, etc.
- Full history tracking of all events related to the specific equipment
- Full visibility of asset profitability, revenue and cost streams.

### Meters

Through the collection and review of vital asset statistics, managers can make smart decisions on the effective usage of equipment. Meters attached to an equipment can be used to report on operating conditions such as oil pressure and vibrations. Purple FSM supports the definition of multiple meters for plant locations and equipment.

### Failures

Failure, incident and defect identification and tracking

### Maintenance Backlog

The maintenance backlog has 3 primary sources for new work orders:

- New work requests – raised by anyone throughout the plant.
- Preventative maintenance – These are auto initiated based on the utilisation of assets.
- Failure and predictive notifications – Any failure in the plant can initiate a failure notification which is converted into a Work Order. Predictive triggers can be configured to trigger Work Orders.

### Preventative Maintenance (Maintenance Forecast)

Activities are used to create a library of Preventative Maintenance procedures. The latter includes inspection, lubrication and routine maintenance work. Once Preventative procedures are created, they are associated with assets and are automatically scheduled as work orders based on meter readings, list dates or time intervals.

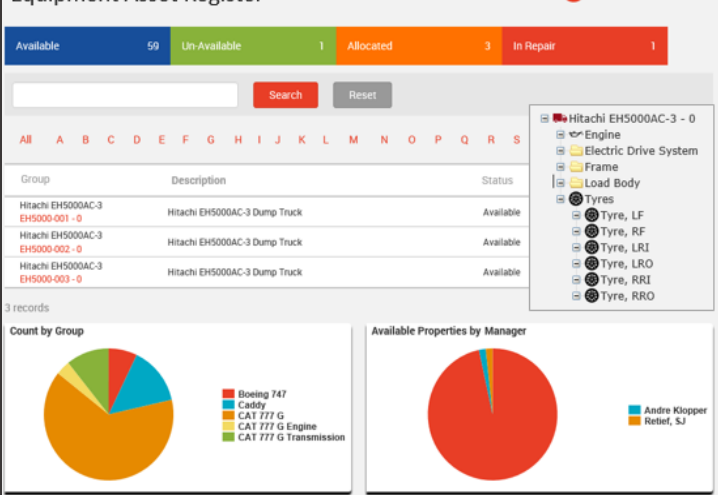
### Maintenance (Work Order) Execution

- Work pack and work order management.
- Work order management includes multi resources (Trade, Items, Services, and Special Tools).
- Best practice work order templates for work optimization.
- Interactive Gantt's and graphics
- Work order budgets and activities
- Work order feedback
- Item reservation and usage feedback via Inventory
- Integration to ERP

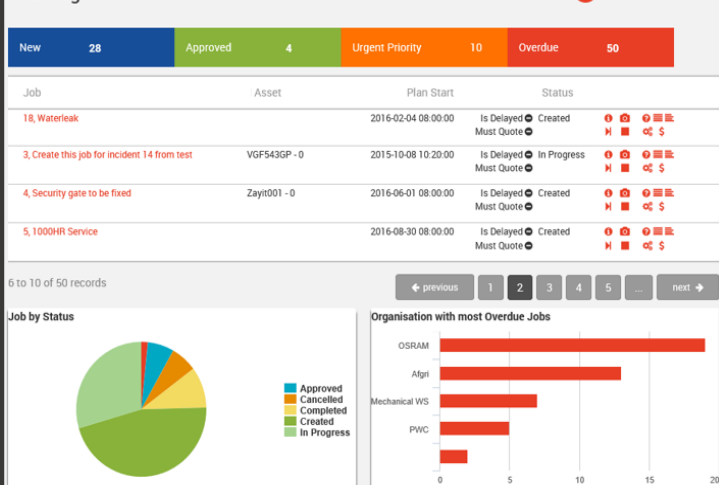
### Plant Equipment Centric Intelligence

- Purple PE enables effective decision making and gives complete visibility through a wide range of reports, cubes and pivot tables which track primary equipment KPIs such as MTBF, MTTR, profitability, etc.

### Equipment Asset Register



### Job Register



For more information about Purple Window and Purple Real Estate modules visit [www.purple-window.com/real-estate](http://www.purple-window.com/real-estate)

Purple Window is an SIS Global Company  
Certified for Microsoft Dynamics  
President's Club for Microsoft Dynamics