

360° Real Estate Land Asset Management

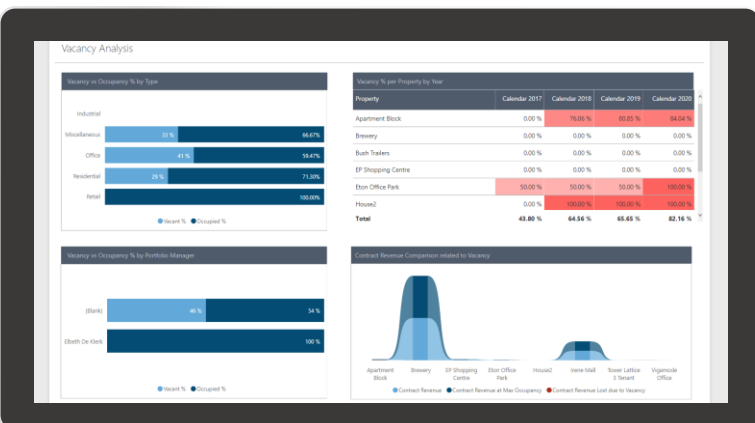


One solution for all land projects

One solution for land asset owners and developers to manage leases, cost recoveries, cost tracking and capitalization of land development, construction and upgrade projects.

Key features include:

- Support multiple land breakdown structures and hierarchies, e.g.:
 - County
 - District
 - Town
 - Estate
 - Plot, Stand, etc.
- Best practice templates to simply, standardise and fast-track the creation of development projects, lease agreements, SLA & Vendor agreements and maintenance tasks.
- Integrated asset lifecycle module.
- Support different project types such as:
 - Time & Material
 - Fixed Price
 - Investment
 - Internal
 - Cost
- Cost tracking with regards to:
 - Time (hours)
 - Material
 - Expenses
 - Revenue (Fees)
- Complete WIP visibility across project hierarchies



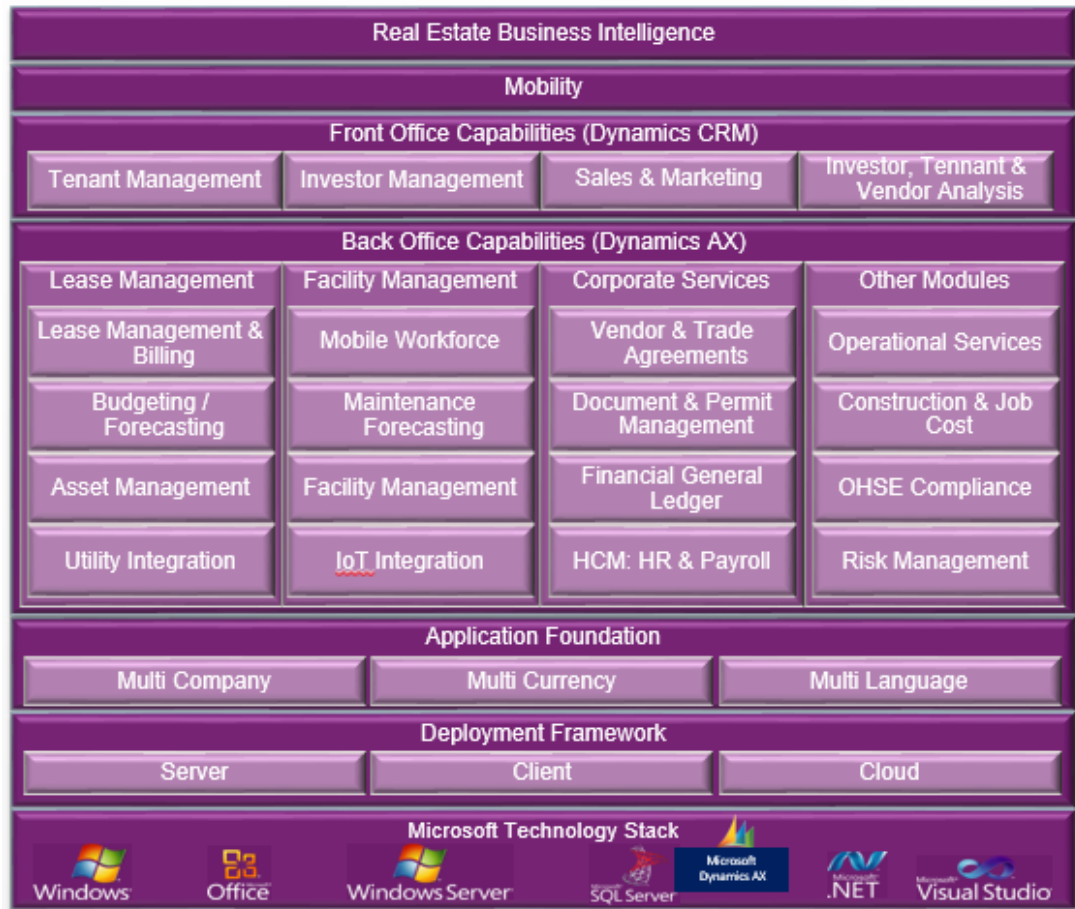
Purple Window

For more information about Purple Window and Purple Real Estate modules visit property.purple-window.com

Certified for Microsoft Dynamics
Purple Window is a Microsoft Partner

360° Land Asset Management

One modularized platform for all real estate role players



Key benefits include:

- One integrated solution.
- Increased visibility on all project expenditure and revenue for labour, raw material, consumables, services and spares.
- More effective resource allocation and visibility.
- Improved tenant communication and retention - lower vacancies.
- Optimized integrated billing and cost recovery.
- Lower maintenance and service cost through better coordination and integrated service delivery.
- Effective warnings and escalations

Complete instant visibility

The land asset module enables owners, investors, developers and agents to all use one integrated property platform, one version of the truth.



Purple Window

For more information about Purple Window and Purple Real Estate modules visit property.purple-window.com

Certified for Microsoft Dynamics
Purple Window is a Microsoft Partner