



PURPLE WINDOW

PURPLE WINDOW

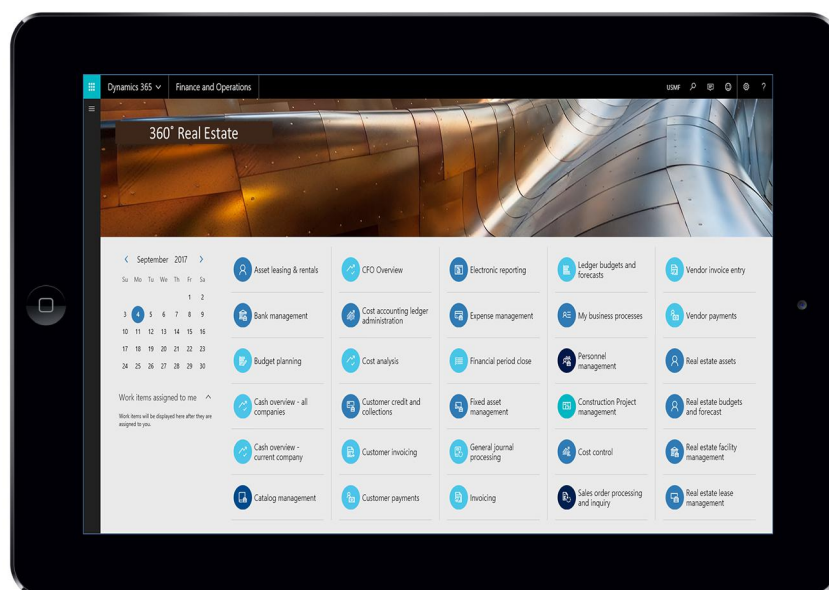
GENERAL LEDGER

Integrated Financial Management

Complete access, control and visibility of all financial activities, to enable well informed decisions.

Key Features Include:

- Roll up and consolidations across corporate entities and dimensions.
- Unlimited GL accounts (COA)
- Detailed drill down capability
- Multi Currency capabilities
- Journal entry templates
- Flexible and detailed analysis
- Easy import and export
- Enhanced security
- Fast and reliable year- end procedures
- Journal approval procedures
- Allocation based on percentages for accounts and dimensions
- Extensive tax functionalities for different tax calculations and reporting
- Budgeting
- Top down and bottom up
- Multiple versions
- Workflow approval process
- Threshold validations
- Integration to Microsoft Excel
- Extracting budget transactions to Excel
- Run comparisons in Excel
- Update in Excel and publish back to Real Estate General Ledger.

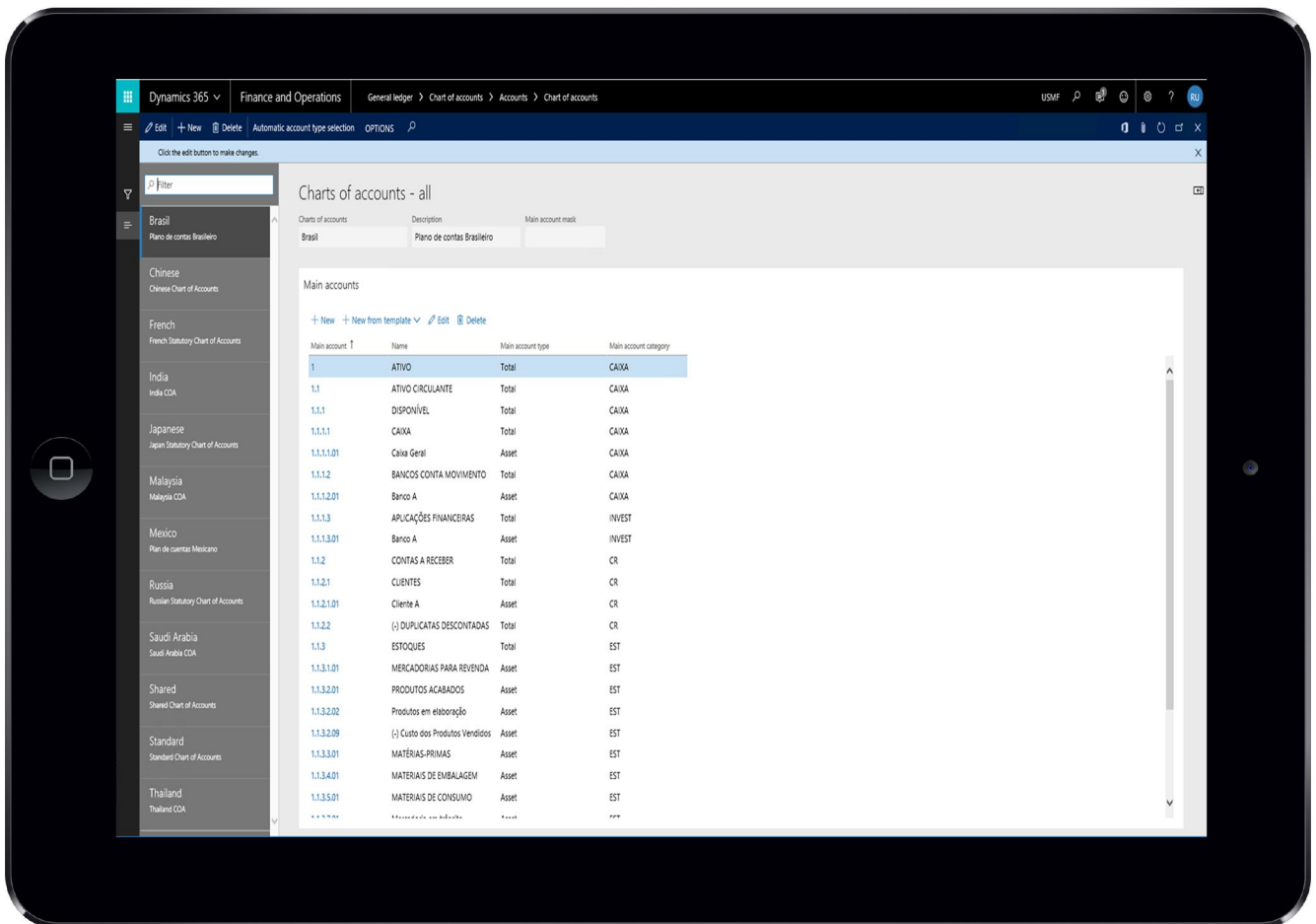


Key benefits include:

- Drill down capabilities to analyse and understand the details behind the big picture.
- Manage multi level consolidations, multi-asset comparisons, as well as multi company accounting.
- Track ownership arrangements and percentages.
- Accommodate local and regional business operations while supporting global reporting and analysis.
- Control the processing capabilities allowed at each location and limit access to sensitive information by user and groups of users.

Intergraded Financial Management

Cross corporate financial control, visibility and comparisons



For more information about Purple Window and Purple Real Estate modules visit www.purple-window.com

Purple Window is part of the SIS Global Company which is a cloud solution provider for Microsoft Dynamics. For more information, Visit www.sisglobal.com