



PURPLE WINDOW

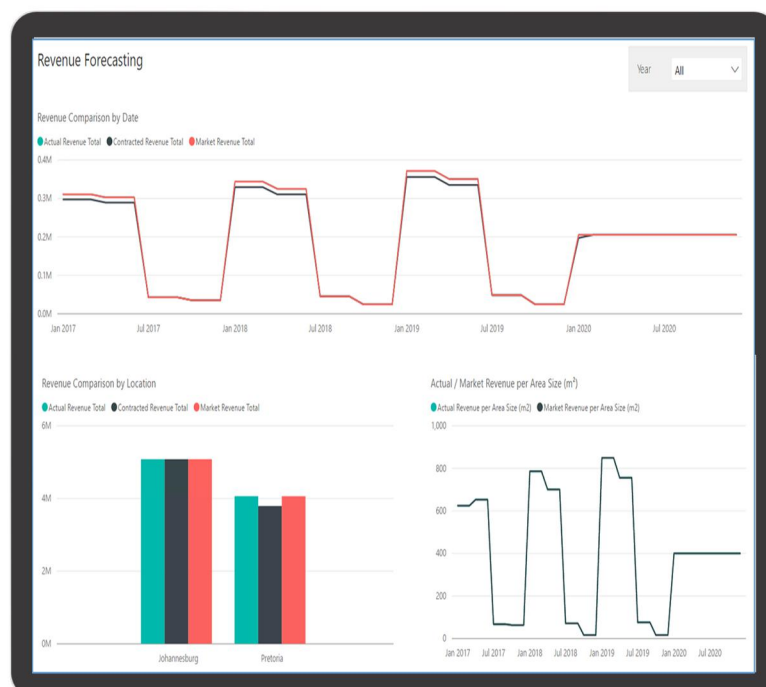
BUSINESS INTELLIGENCE (BI)

Instant portfolio visibility

Real Estate BI gives instant access to the current state and financial performance of all properties, related leases, maintenance activities and incidents

Key Features Include:

- Management dashboards for each user group
 - Investors
 - Portfolio managers
 - Lease managers
 - Tenants
 - Maintenance managers
- Detail reports including the following
 - Levy roll
 - Body corporate schedule
 - Brokers vacancy
 - Letting report
- Operational report including:
 - Insurance diary
 - Maintenance monitoring
 - Letting commission
 - Lease check list
- KPI reports such as:
 - Portfolio vacancy analysis
 - Occupancy analysis
 - Credit control
 - Expense recoveries
 - Return on investment (ROI)
 - Rent yield
 - Maintenance % of income
 - Void %
 - Sold property per inventory ratio

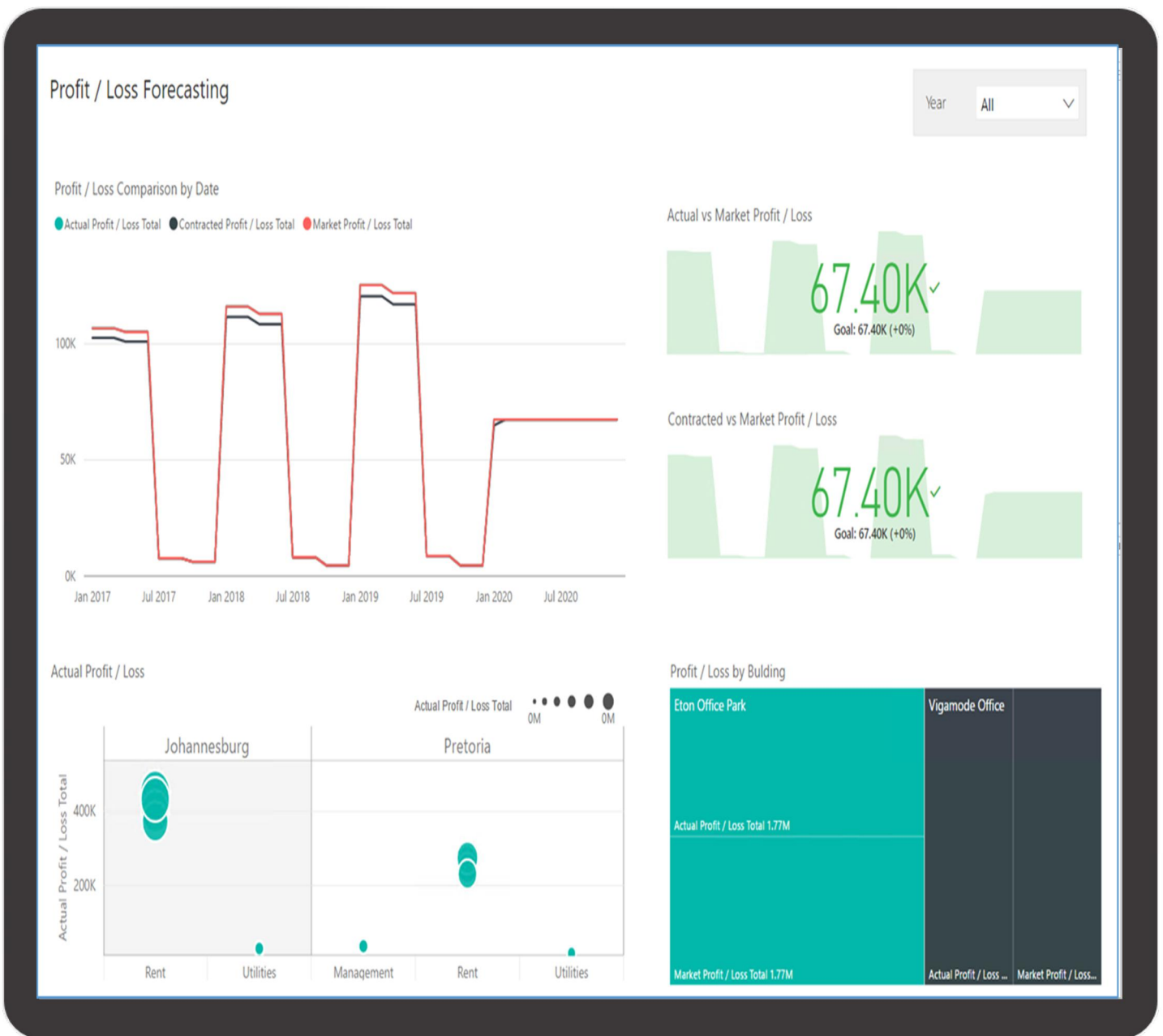


Key benefits include:

- One version of the truth
- Instantaneous access to information
- Quick access to month end reports
- Simple data segmentation by location, asset group, investor, portfolio manager
- Property lifecycle visibility
- Property profitability visibility
- Confidentiality via role driven security

Aim to Deliver

Correct and timeous management information to enable investors and portfolio managers to effectively operate their properties.



For more information about Purple Window and Purple Real Estate modules visit www.purple-window.com

Purple Window is part of the SIS Global Company which is a cloud solution provider for Microsoft Dynamics. For more information, Visit www.sisglobal.com